



# VALENTINE'S DAY SPECIALS

A Tribute to Timeless Romance in Film ♥ February 14<sup>th</sup> to February 16<sup>th</sup>

## STARTER

Pretty Woman 1990 ♥ 18  
escargot burgundy **GF**  
*boucharð père & fils \$15*

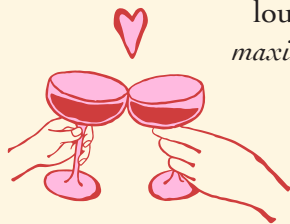
The Wedding Singer 1998 ♥ 19  
colossal meatballs  
*lormano classico chianti \$12.50*

When Harry Met Sally 1989 ♥ 15  
the cobb salad **GF**  
*crath pinot gris \$12.50*

Chef 2014 ♥ 18  
cubano spring rolls  
*stoller pinot noir \$15.50*

Simply Irresistible 1999 ♥ 23  
crab napoleon **DF**  
*bread and butter chardonnay \$12.50*

The Princess and the Frog 2009 ♥ 17  
louisiana gumbo  
*maximin riesling \$14*



## SIPS

Heart of Gold ♥ 15  
stoli raspberry vodka, combier, framboise,  
triple sec, st. germain, berenstzen pear,  
prosecco, pineapple juice, lemon juice

Cupid's Arrow Mocktail ♥ 7  
cranberry juice, raspberry syrup, lime juice,  
pineapple juice

## ENTREE

Lady & the Tramp 1955 ♥ 27  
tony's town square spaghetti & meatballs  
*lormano classico chianti \$12.50*

No Reservations 2007 ♥ 60  
the ribeye **GF DF**  
*stags leap cabernet \$30*

My Big Fat Greek Wedding 2002 ♥ 30  
braised lamb shanks **GF**  
*dry creek red zinfadel \$22*

Like Water for Chocolate 1992 ♥ 35  
rose petal quail **GF DF**  
*stoller pinot noir \$15.50*

Annie Hall 1977 ♥ 57  
lobster thermidor  
*arona sauvignon blanc \$14*

Ratatouille 2007 ♥ 24  
ratatouille **VE**  
*aime roques rosé \$11*

## DESSERT



Chocolate Wishes & Strawberry Kisses ♥ 14  
chocolate sponge, strawberry mousse,  
strawberry cremeux, strawberry compote,  
chocolate cookie streusel  
*taylor 20 year old tawny port \$14*

Apple Lychee Pudding ♥ 14  
clarified apple gelee, lychee pudding, fresh fruits **GF**  
*caposaldo moscato \$12.50*